

# BCMA Series

## Common Mode Filters For Automotive Signal Line

### Size 4532

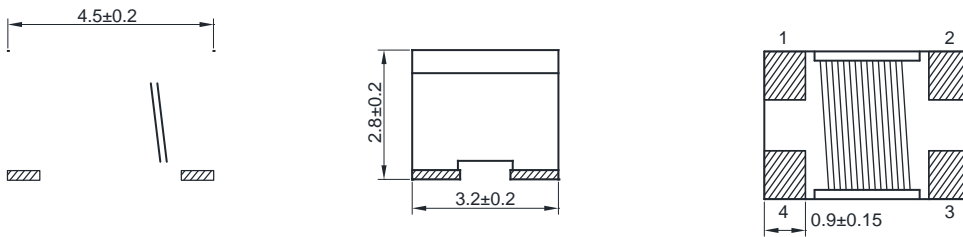
#### FEATURES

Impedance variation: Extensive lineup are available for compatibility with various usages  
 Common mode filter for Signal Line  
 Operating temperature range: -40 to +125  
 AEC-Q200 qualified  
 Quantity: 500pcs

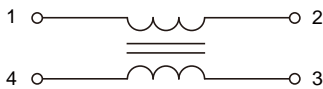
#### APPLICATION

Radiated noise suppression for car multimedia accessories (MO) (C)

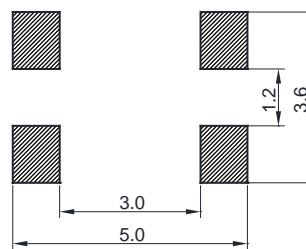
#### Dimensions: [mm]



#### Schematic:



#### Land Pattern: [mm]



#### Electrical Properties:

Part No	Z @ 100 MHz Min.	Z @ 100 MHz Typ.	I <sub>R</sub> Max.	R <sub>DC</sub> Max.	V <sub>DC</sub> Max. (V)	I <sub>R</sub> Min.
BCMA4532-900N				0.050	50	10M
BCMA4532-231N			3500	0.050	50	10M
BCMA4532-601N	450		2500		50	10M
BCMA4532-901N	650				50	10M
BCMA4532-142N					50	10M
BCMA4532-282N				0.350	50	10M

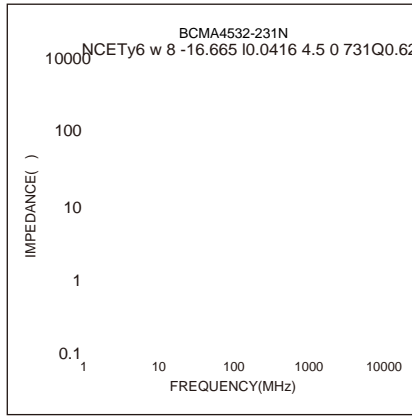
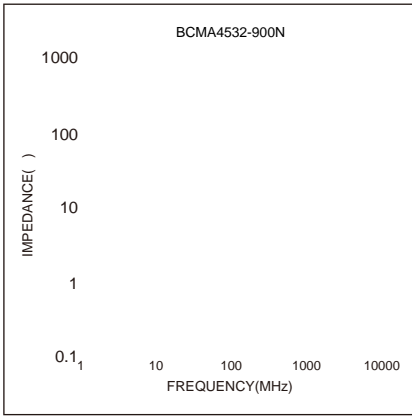
Temperature Rise Current: The actual value of DC current when the temperature rise is T=40°C



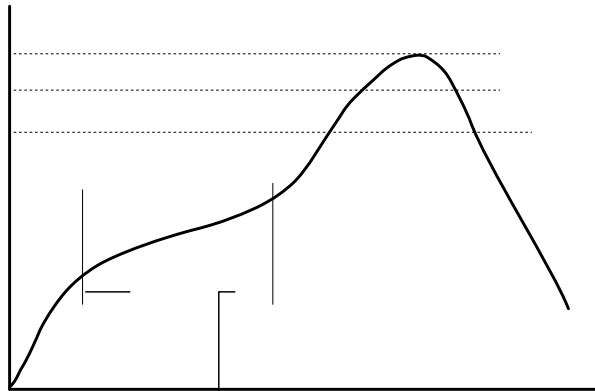
1

# Typical Electrical Characteristics:

10



## Soldering Reflow:



Preheat condition: 150 ~200 / 60~180 sec.

Allowed time above 217 : 60~150 sec.

Max temperature: 260 .

Max time at max temperature: 10 sec.

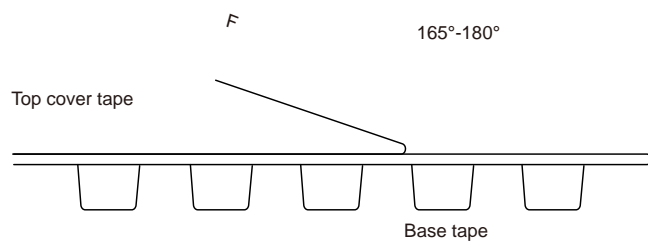
Allowed Reflow time: 3x max.

## Packaging Information:

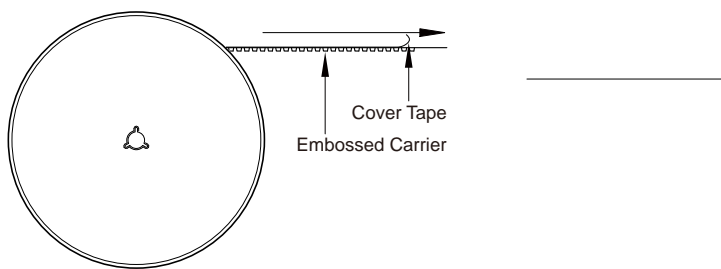
Tape Dimension :

Series	A0 (mm)	B0 (mm)	D (mm)	P0 (mm)	P1 (mm)	W (mm)	K0 (mm)	E (mm)	T (mm)
BCMA4532	3.6±0.1	4.9±0.1	1.5±0.1	4.0±0.1	8.0±0.1	12.0±0.3	3.0±0.1	1.75±0.1	0.26±0.05

Peel force of top cover tape:



Reel Dimension : [mm]



## Cautions and Warnings:

### Storage Conditions :

- The storage period is within 12 months after the completion of production. Be sure to follow the storage conditions (tefa8c4 0e to follow the storage condi -

- 

- 

- 

### Operation Instructions:

- 

- 

- 

-